



5/78-96 Pyrmont Bridge Road Camperdown NSW

6 🚗

3 to 5 year lease term offered.

Showroom/retail: 404sqm

Mezzanine Office: 178sqm

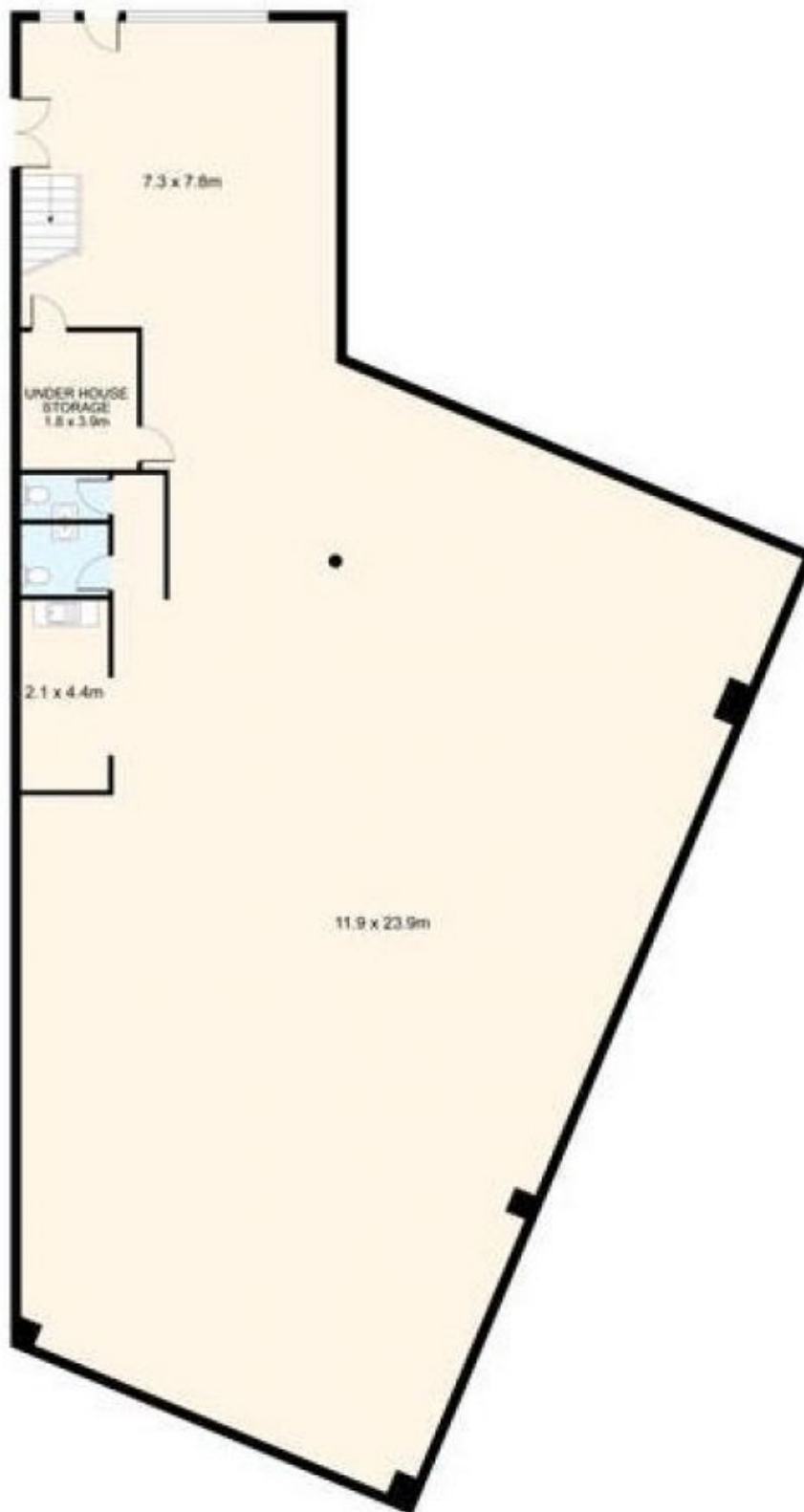
A modern 3 level industrial/retail showroom building, the property was developed in 1998. Site has a street frontage of nearly 100 metres with on grade parking for 20 car spaces (shared) and a further 30 basement car spaces.

The premises is a modern well lit suite Fully air conditioned, the space has been previously used as retail and straight office space.

Approx. 404sqm of ground floor retail/showroom space and 178sqm mezzanine office. The suite is fully air-conditioned with good natural light and street exposure.

Fantastic exposure, bulky goods retail complex, located

Price : \$320/sqm Net (exGST)
Building Size : 582 sqm
View : <https://www.cityalliance.com.au/lease/nsw/inner-west/camperdown/commercial/showroomsbulky-goods/6404673>



INTERNAL AREA: 404 m²



DISCLAIMER: THIS IS FOR ILLUSTRATIVE PURPOSES ONLY.
ALL DIMENSIONS ARE APPROXIMATE AND IT DOES NOT
CONSTITUTE PART OF ANY LEGAL DOCUMENTS

ADDRESS:

5/78-96 PYRMONT BRIDGE ROAD, ANNANDALE