



5/1801 Botany Road Botany NSW

Unit 5 has 732sqm office and 1,558sqm warehouse.
Discovery Cove Industrial Estate currently has a range of flexible warehouse and office spaces available for lease.

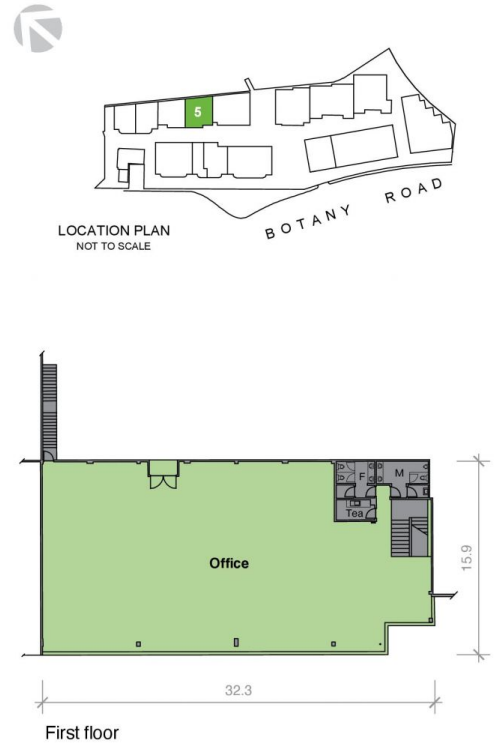
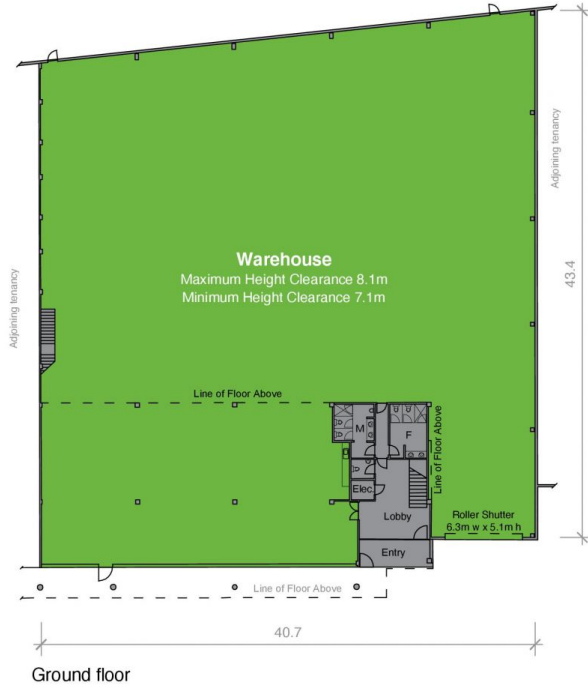
- * 9 metre clearance warehouse
- * 24 hour security
- * On-site café
- * Landscaped estate
- * Close to Port Botany, Sydney Airport and the M5 Motorway.

Price : \$180/sqm Net (exGST)
Building Size : 2289 sqm
View : <https://www.cityalliance.com.au/lease/nsw/eastern-suburbs/botany/commercial/industrial/6016798>

UNIT 5 PLAN

AREA SCHEDULE SQM

Area	SQM
Ground floor	
Warehouse	1,772.4
First floor	
Office	516.8
Total area	2,289.2



■ FOR LEASE



Disclaimer: This plan has been prepared for marketing purposes only. Interested parties should undertake their own enquiries as to the accuracy of the information. Areas are approximate and dimension rounding may result in area discrepancies.

	SITE PLAN 1801 Botany Road, BANKSMEADOW, NSW	Date: 25/10/2006	Plan prepared by: Real Estate Plans & Surveys	Phone: 02 9890 4744 Fax: 02 9475 5050 info@realserve.com.au www.realserve.com.au	
		Ref: 23471GG			Rev: 3
		Scale: Not to Scale			