



Level 3/3.04/61 Dunning Avenue Rosebery NSW

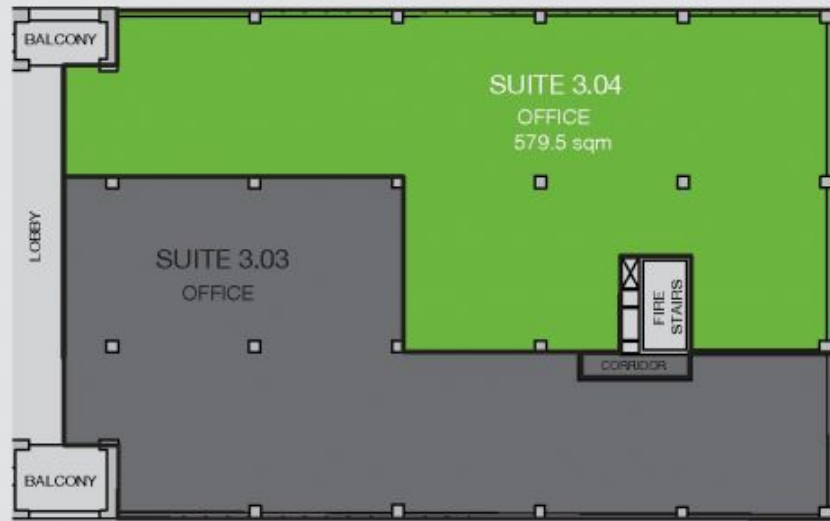
10 

Green Central offers contemporary office space conveniently located near some of Sydney's finest cafés and just 300m from a variety of retail options including Coles supermarket and a Medical Centre.

- ~ Office space 574sqm available
- ~ Windows on three sides of the building provide an abundance of natural light
- ~ Contemporary design with landscaped gardens
- ~ 5 star NABERS energy rating
- ~ Multipurpose basketball/tennis courts on-site and 500m from Turuwell Park

Price : \$460/sqm Net (exGST)
Building Size : 574 sqm
View : <https://www.cityalliance.com.au/lease/nsw/eastern-suburbs/rosebery/commercial/offices/5800405>

level 3 floor plan+



Area schedule	[sqm]
Suite 3.04	579.5