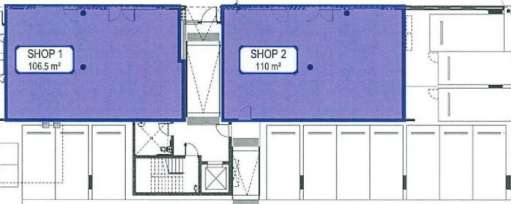


6/29 Applebee Street St Peters NSW

- ~ Showroom / Studio / Office approx. 72sqm
- ~ Large glass shop front.
- ~ Good natural light.
- ~ Polished concrete floors.
- ~ Air Conditioned.
- ~ 1 car space.

Building Size : 72 sqm
View : <https://www.cityalliance.com.au/lease/nsw/inner-west/st-peters/commercial/retail/5665765>

HUTCHINSON STREET



APPLEBEE STREET

81
1107
GROUND FLOOR PLAN
1:100

GROUND FLOOR PLAN
AS SHOWN BY



CD 1101