

53/76B Edinburgh Road Marrickville NSW

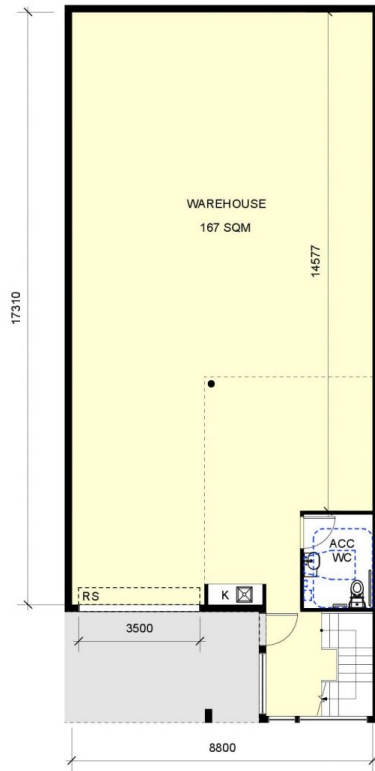
Unit 53
Warehouse: 167sqm
Office: 32sqm

Type : Industrial
Building Size : 199 sqm
View : <https://www.cityalliance.com.au/lease/nsw/inner-west/marrickville/commercial/industrial/5665717>

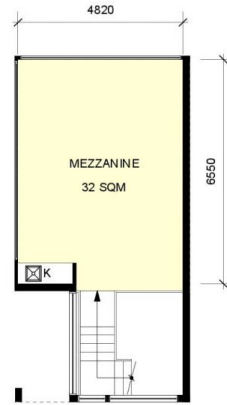
A quality industrial unit offering functional warehousing with modern office accommodation. Benefits include: wide driveways, shaded dedicated parking, and easy access through the estate.

- * Up to 7m internal warehouse clearance
- * 3.5m wide motorised roller shutter door
- * Awning over roller door providing all weather loading
- * Quality Air-conditioned Mezzanine Office
- * Inviting stair and entry lobby area
- * Individual bathroom and kitchenette facilities
- * Sun screened allocated car-parking

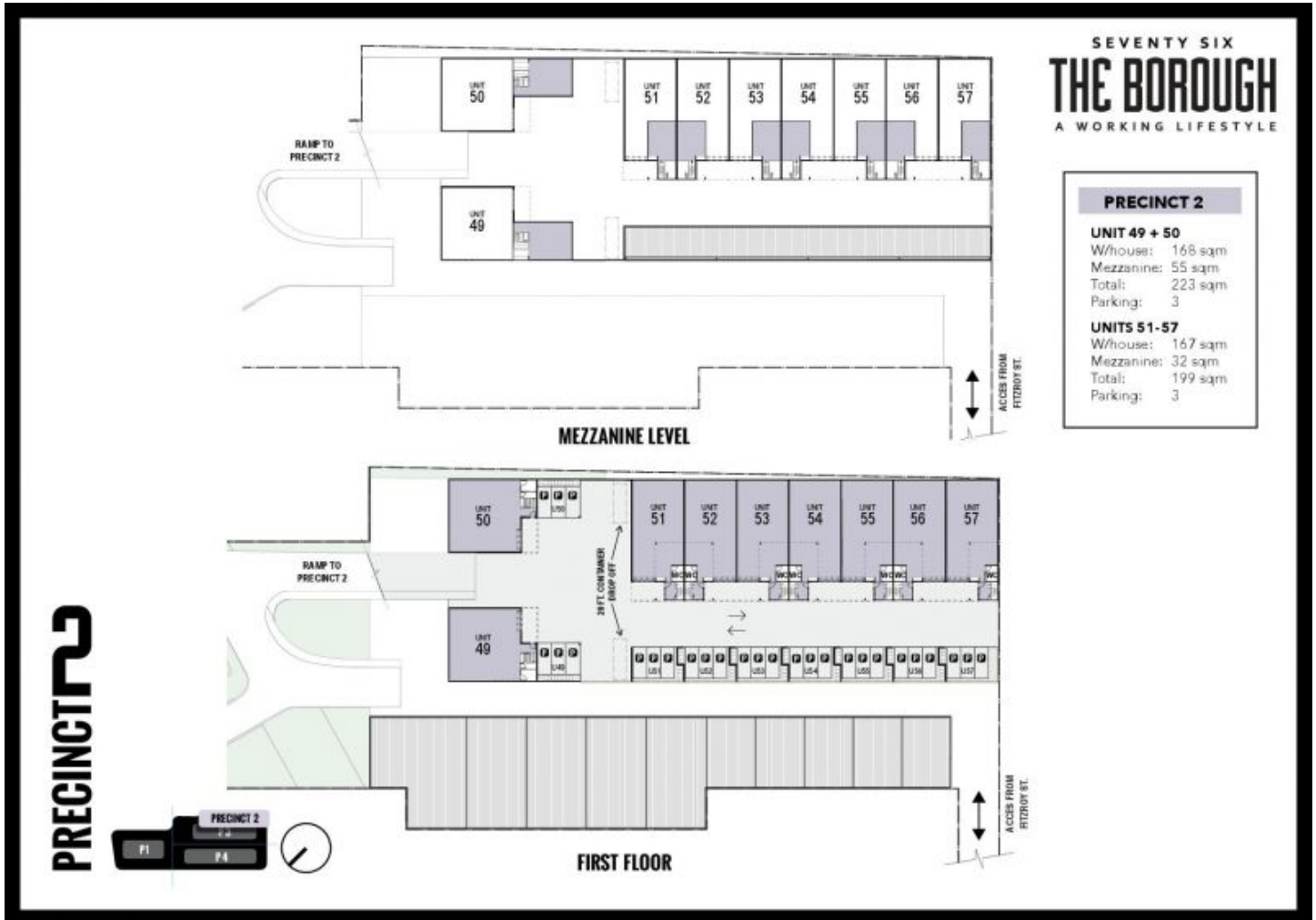
[For full version visit the website](https://www.cityalliance.com.au)



1 UNIT TYPE 02 - GROUND FLOOR
1/100



2 UNIT TYPE 02 - MEZZANINE FLOOR
1/100



SEVENTY SIX
THE BOROUGH
A WORKING LIFESTYLE

PRECINCT 2	
UNIT 49 + 50	
Warehouse:	168 sqm
Mezzanine:	55 sqm
Total:	223 sqm
Parking:	3
UNITS 51-57	
Warehouse:	167 sqm
Mezzanine:	32 sqm
Total:	199 sqm
Parking:	3

PRECINCT 2



FIRST FLOOR