



## 64 Mentmore Avenue Rosebery NSW

6 

Available end of October 2023

~ Modern warehouse & office building, newly refurbished throughout. Grand entrance, carpeted, air-conditioned offices with toilet and kitchen facilities (granite bench tops, etc.)

~ The complex provides excellent container truck access. Its internal clearance exceeds 6m to 7.5m in the warehouse.

~ The premises is ideal for light manufacturing, warehousing or bulky goods retailing.

Warehouse: 773sqm

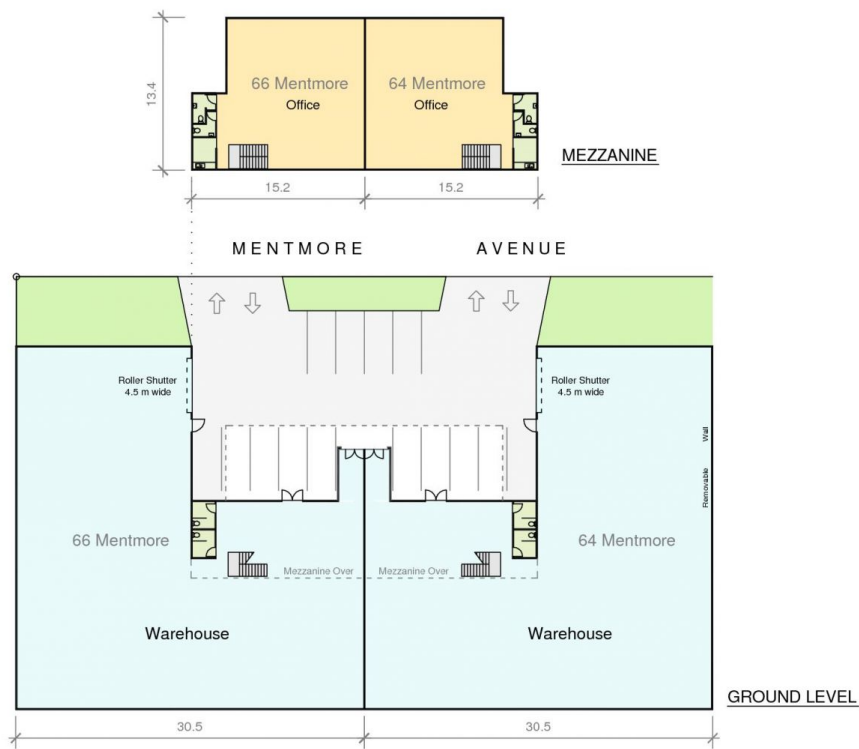
Office: 169.5sqm

Total Size: 942.5sqm

**Price** : POA

**Building Size** : 943 sqm

**View** : <https://www.cityalliance.com.au/lease/nsw/eastern-suburbs/rosebery/commercial/industrial/5665575>



#### Information Schedule

<b>64 Mentmore Ave</b>	
Warehouse	773.0 m <sup>2</sup>
Office	169.5 m <sup>2</sup>
<b>Total 64 Mentmore Ave</b>	<b>942.5 m<sup>2</sup></b>
<b>66 Mentmore Ave</b>	
Warehouse	773.0 m <sup>2</sup>
Office	169.5 m <sup>2</sup>
<b>Total 66 Mentmore Ave</b>	<b>942.5 m<sup>2</sup></b>

**Disclaimer:** This plan has been prepared for marketing purposes only. Interested parties should undertake their own enquiries as to the accuracy of the information. Areas based on PCA Survey by John B White plan reference 123094

Plan Prepared For:  
**ROYAL CROWN GROUP**

**SITE PLAN**  
**64 - 66 Mentmore Avenue**  
**ROSEBERY, NSW**

Date:	06/02/2014
Ref:	51640
Rev:	B
Drawn:	CLA
Checked:	JB
Scale:	1:300 @ A3
Sheet:	2 of 3

**sydney** canberra melbourne brisbane adelaide perth  
**REALSERVE** P 02 9629 9377  
F 02 9475 5050  
Real Estate Plans & Surveys [www.realserve.com.au](http://www.realserve.com.au)