



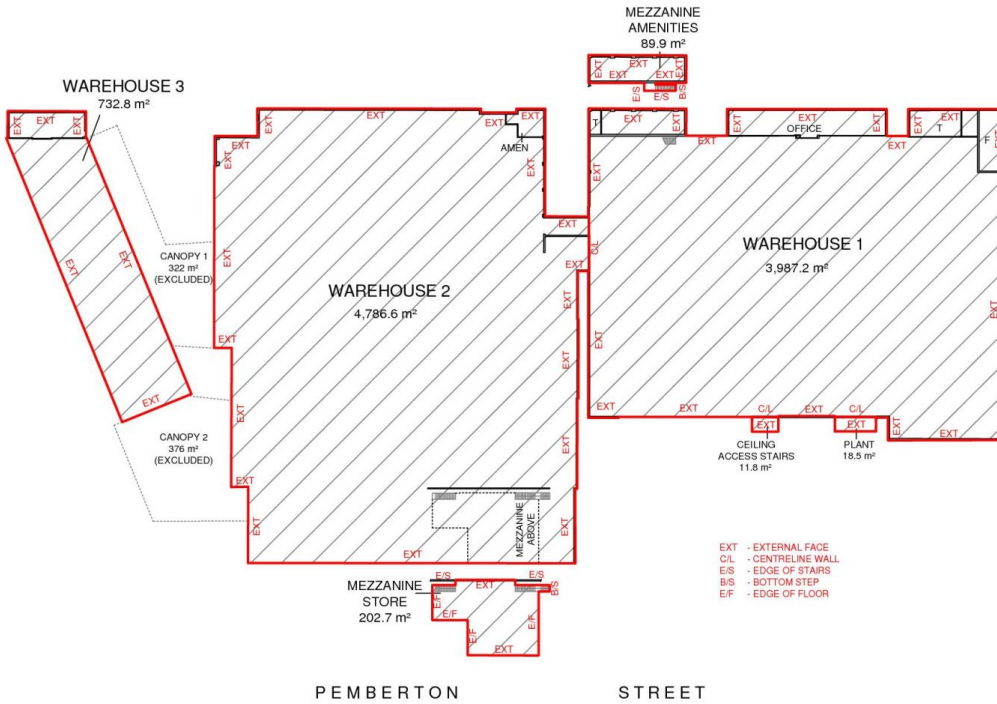
Part A/16 Sir Joseph Banks Street Botany NSW

- ~ Budget rental.
- ~ Approximately 1,000sqm high clearance warehouse.
- ~ Roller shutter with undercover awning.
- ~ Large yard / hard stand area.

Price : POA
Building Size : 1000 sqm
View : <https://www.cityalliance.com.au/lease/nsw/eastern-suburbs/botany/commercial/industrial/5665572>

LETTABLE AREA PLAN FOR 16-18 SIR JOSEPH BANKS STREET, BOTANY, NSW

SIR JOSEPH BANKS STREET



SCHEDULE OF AREAS

WAREHOUSE 1	3,987.2 m ²
WAREHOUSE 2	4,786.6 m ²
WAREHOUSE 3	732.8 m ²
MEZZANINE AMEN	89.9 m ²
MEZZANINE STORE	202.7 m ²
CEILING ACCESS STAIR	11.8 m ²
PLANT	18.5 m ²

TOTAL AREA 9,829.5 m²

LETTABLE AREA



METHOD OF MEASUREMENT

AREAS HAVE BEEN CALCULATED IN ACCORDANCE WITH THE PROPERTY COUNCIL OF AUSTRALIA (PCA) METHOD OF MEASUREMENT FOR LETTABLE AREA (MARCH 1997)

(SURVEY DATE: 05/11/2013)

GUIDELINES USED

GROSS LETTABLE AREA

0 5 10 15 20 25 30

SCALE 1 : 600

PLAN PREPARED FOR:

STANDARD UNIVERSAL GROUP

LETTABLE AREA PLAN
16-18 SIR JOSEPH BANKS STREET
BOTANY, NSW

DATE: 05/11/2013

REF: 50883

REV: -

DRAWN: RB

CHECKED: CL

SCALE: 1:600 @ A3

SHEET: 1 of 1

sydney canberra melbourne brisbane adelaide perth

REALSERVE

Real Estate Plans & Surveys

P 02 9629 9377

F 02 9475 5050

www.realservice.com.au