

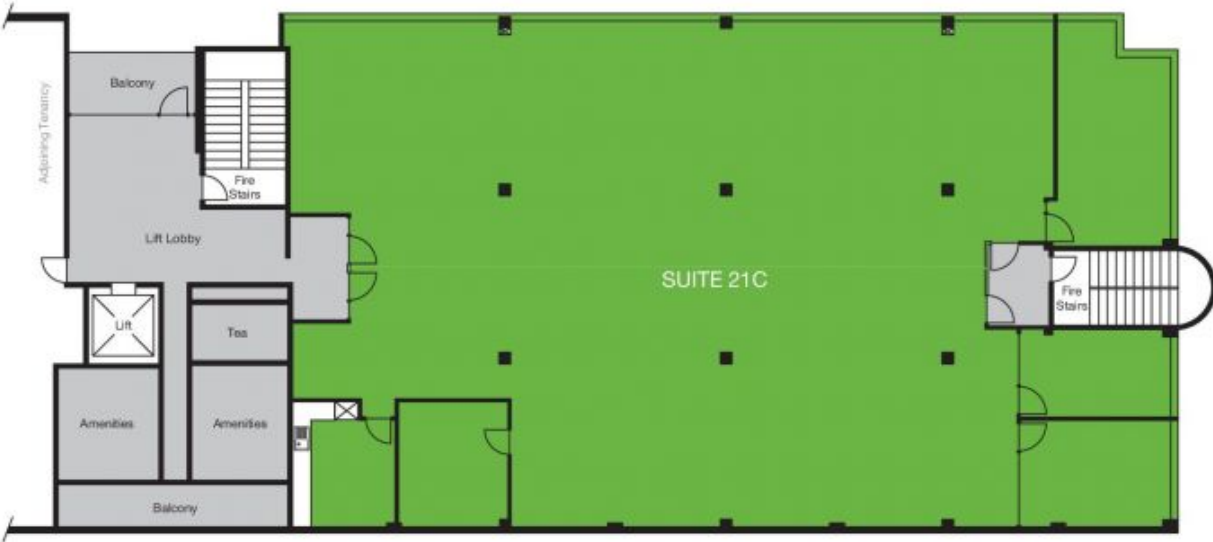
**Level 1/21c/1801 Botany Road Botany NSW**

- ~ Approx. 477sqm office suite.
- ~ Two partitioned office + One large board room.
- ~ Own kitchenette.
- ~ 24 hour security.
- ~ On-site café.
- ~ Landscaped estate.
- ~ Close to Port Botany, Sydney Airport and the M5 Motorway.
- ~ Ideal for Port related companies.

**Price** : POA  
**Building Size** : 477 sqm  
**View** : <https://www.cityalliance.com.au/lease/nsw/eastern-suburbs/botany/commercial/offices/5665467>

UNIT 21C OFFICE PLAN

AREA SCHEDULE	SQM
Level 1	
Suite 21C	477.0
Total	477.0



■ FOR LEASE

SITE PLAN



■ FOR LEASE